

# FRANKENSTEIN

A NEW ADAPTATION PERFORMING  
IN REPERTORY WITH DRACULA

**ESC**



# Classic Stage Company

JOHN DOYLE, Artistic Director

TONI MARIE DAVIS, Chief Operating Officer/GM

presents

# FRANKENSTEIN

BY **TRISTAN BERNAYS**

BASED ON THE NOVEL BY **MARY SHELLEY**

WITH  
**STEPHANIE BERRY, ROB MORRISON**

SCENIC  
DESIGN

**JOHN  
DOYLE**

COSTUME  
DESIGN

**TONI-LESLIE  
JAMES**

LIGHTING  
DESIGN

**ADAM,  
HONORÉ**

SOUND  
DESIGN

**LEON  
ROTHENBERG**

ORIGINAL  
MUSIC

**ROB  
MORRISON**

FIGHT  
DIRECTOR

**MICHAEL G.  
CHIN**

MOVEMENT  
DIRECTOR

**DYANE  
HARVEY-SALAAM**

PROP  
SUPERVISOR

**CARRIE  
MOSSMAN**

ASSOCIATE  
SCENIC DESIGN

**DAVID L.  
ARSENAULT**

ASSOCIATE  
COSTUME DESIGN

**MICHAEL  
MAGARACI**

ASSOCIATE  
LIGHTING DESIGN

**SHANNON  
CLARKE**

CASTING

**TELSEY + COMPANY  
KARYN CASL, CSA  
DESTINY LILLY, CSA**

PRESS  
REPRESENTATIVES

**BLAKE ZIDELL AND  
ASSOCIATES**

PRODUCTION  
STAGE MANAGER

**MEGAN SCHWARZ  
DICKERT**

ASSISTANT  
STAGE MANAGER

**DIANE HEALY**

DIRECTED BY **TIMOTHY DOUGLAS**

# FRANKENSTEIN

---

(in alphabetical order)

The Creature / Victor Frankenstein  
**STEPHANIE BERRY**

The Chorus  
**ROB MORRISON**

*Frankenstein* will be performed  
without an intermission.

All performers in this production are  
members of Actors' Equity Association, the  
Union of Professional Actors and Stage  
Managers in the United States.

*The use of any recording device, either audio  
or video, and the taking of photographs,  
either with or without flash, is strictly  
prohibited.*

*Please silence all electronic devices. The  
use of cell phones during the performance is  
prohibited by New York City law.*

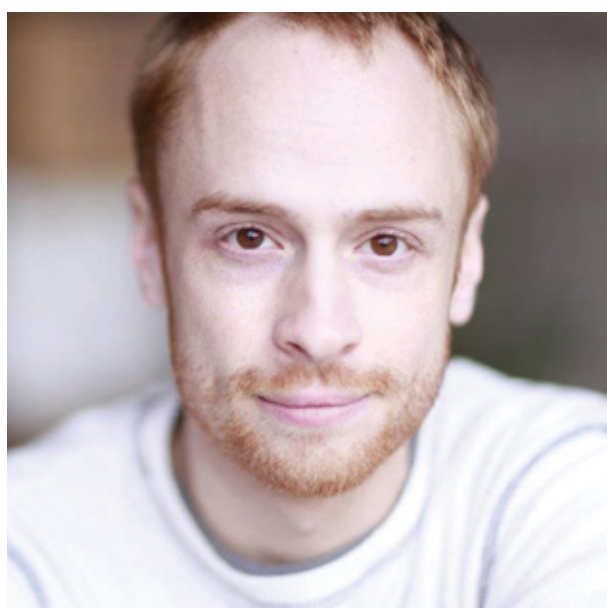
# WHO'S WHO

---



**STEPHANIE BERRY** (The Creature/Victor Frankenstein) was last seen in *For All the Women Who Thought They Were Mad* (Soho Rep), and *Gloria: A Life* (Daryl Roth Theatre). She is a 2019 Helen

Hayes Award Nominee for Best Lead Actress in *Gem of the Ocean* (Round House Theatre), a 2019 Lucille Lortel and Outer Critics Awards Nominee for Best Featured Actress for *Sugar In Our Wounds* (Manhattan Theatre Club). Movie credits: *Before You Know It*, *OG*, *Delivery Man*, *Invasion*, *No Reservations* and *Finding Forrester*. Television credits: "The Last OG," "Bull," "Blue Bloods," all the "Law and Order" shows. She is a recipient of an OBIE Award for her one-person show, *The Shaneequa Chronicles*.



**ROB MORRISON** (The Chorus, Original Music). Off-Broadway: *Avenue Q*, *Nevermore*, and *Pinkalicious*. Rob played the titular role in an all-new, actor/musician version of *You're a Good Man, Charlie Brown*

at Cincinnati Playhouse. Regional: *Working* (Berkshire Theatre Group), *Moonshine* (Dallas Theater Center), and *Nerds* (Philadelphia Theater Company, North Carolina Theater). Rob is the voice of Doodle on Nick Jr's "Sunny Day," and over 25 characters on the Emmy-winning PBS series "Peg + Cat." A multi-instrumentalist and songwriter, Rob is a member of the

folk-rock collective The Hollows. He composed the score for the award-winning film *Sun Belt Express*. @therobmorrison

**TIMOTHY DOUGLAS** (Director). Premieres: August Wilson's *Radio Golf* (Yale Rep), Robert O'Hara's *Etiquette Of Vigilance* (Steppenwolf), Jason Reynolds' *Long Way Down* (Kennedy Center), Rajiv Joseph's *The Lake Effect* (Silk Road Rising), Keith Adkins' *Safe House* (Cincinnati Playhouse). Off-Broadway: *Yellowman* (Billie Holiday), *Bronte: A Portrait Of Charlotte* (Alloy), *Rosmersholm* (Oslo Elsewhere). Others: *Disgraced* (Arena Stage, Great Theatre of China/China tour), *The Color Purple* (Portland Center Stage), and projects for Actors Theatre of Louisville, Guthrie, ACT, Folger Shakespeare, Mark Taper Forum, 24 Hour Plays/Broadway, South Coast Rep, Sundance, Round House, and many others. Currently serving as Distinguished Artist in Residence at Emerson College. 2018 Lloyd Richards'/National Black Theatre Award. MFA: Yale. [timothydouglas.org](http://timothydouglas.org)

**TRISTAN BERNAYS** (Playwright) is a writer and performer from London. His work has been performed at Soho Theatre, Bush Theatre, National Theatre Studio, Roundhouse, and Southwark Playhouse. Tristan's play *Old Fools* performed last spring at Southwark Playhouse. Tristan's play *Boudica* was performed at The Globe in September 2017 as part of Emma Rice's Summer of Love season. After receiving rave reviews at Edinburgh Festival 2013, his one man show *The Bread & The Beer* transferred to Soho Theatre before a UK tour. His most recent

show *Teddy* at Southwark Playhouse won Best New Musical from the Off West End Award 2016, and in 2018 toured the UK. He performed in his original play *Testament* at Vault Festival 2017, where it won the Show Of The Week. He was also a member Bush Theatre's Emerging Writers Group 2016/17. His adaptation of *Frankenstein* had its original premiere at Wiltons' Music Hall.

**JOHN DOYLE** (Scenic Designer). CSC: *Passion, Allegro, Peer Gynt, Dead Poets Society, Pacific Overtures* (Drama Desk nom. Best Musical Revival), *As You Like It, Fire and Air, Carmen Jones* (Lucille Lortel Award for Outstanding Revival, nominee for Outstanding Director; Drama Desk nominee for Best Musical Revival and Director of a Musical; Drama League nominee for Outstanding Revival of a Musical) *The Resistible Rise of Arturo Ui, The Cradle Will Rock, Macbeth*. Broadway: *Sweeney Todd* (Tony and Drama Desk Awards for Best Director of a Musical), *Company* (Tony Award for Best Musical Revival), *A Catered Affair* (Drama League Award for Best Musical Production), *The Visit* (Tony nom. for Best Musical), *The Color Purple* (Tony Award for Best Musical Revival, Drama Desk Award for Best Director of a Musical). Off-Broadway: *Wings* (Second Stage Theatre); *Road Show* (Public Theater); *Where's Charley?*, *Irma La Douce* (Encores!). Regional: *Kiss Me, Kate* (Stratford Festival); *The Caucasian Chalk Circle* (ACT); *Merrily We Roll Along, The Three Sisters* (Cincinnati Playhouse in the Park); *Ten Cents a Dance* (Williamstown); *The Exorcist* (L.A.). In the U.K., John Doyle has been artistic director of four regional

theaters. U.K. includes: *The Gondoliers*, *Mack and Mabel* (West End); *A Midsummer Night's Dream* (Regent's Park); *Oklahoma!* (Chichester); *Amadeus* (Wilton's Musical Hall). Opera includes: *Madama Butterfly* (Grange Park), *Lucia di Lammermoor* (Houston/La Fenice/Sydney Opera House), *Peter Grimes* (Metropolitan Opera), *The Rise and Fall of the City of Mahogany* (LA Opera). Film: *Main Street*. John Doyle is Artistic Director of CSC.

**TONI-LESLIE JAMES** (Costume Designer) has designed twenty Broadway productions including *Bernhardt/Hamlet*, *Come From Away*, and August Wilson's *Jitney*. Awards: three Tony Award nominations, a 2019 Drama Desk Award and five additional Drama Desk nominations, six Lucille Lortel nominations, two Hewes Design Awards, the Irene Sharaff Young Masters Award, and the 2009 Obie Award for Sustained Excellence in Costume Design.

**ADAM HONORÉ** (Lighting Designer). CSC: *Carmen Jones*. Select Off-Broadway: *Ain't No Mo'* (The Public); *Behind the Sheet* (Ensemble Studio Theatre); *Faux-bia!* (Carnegie Hall). Select Regional: Arena Stage, Capital Repertory Theatre, Dallas Theater Center, Huntington Theater Company, Shakespeare Theater Company, and Signature Theatre. International: Haydn's *The Seasons* (Austria); *Kinky Boots* (Manila); *Fun Home* (Int'l Premiere, featuring Lea Salonga). Drama Desk Nominee and AUDELCO Award recipient. [HonoreLighting.com](http://HonoreLighting.com)

**LEON ROTHENBERG** (Sound Designer). Recent Broadway: *Hillary and Clinton*, *The Waverly Gallery*, *Mike Birbiglia's The New One*, *The Boys In The Band*, *A Doll's House, Part 2*. Other work in NY: 59E59, NYCC, Primary Stages, Second Stage, Manhattan Theatre Club, Public Theater, MCC. Regional Credits include work at Arizona Theatre Company, Huntington Theater, La Mirada Performing Arts Center, Two River Theater, Second Stage, A.C.T., City Theater Pittsburgh, Arena Stage, Old Globe, Pasadena Playhouse, Geffen Playhouse, Portland Center Stage, Seattle Rep, La Jolla, Williamstown Theater Festival, NY Stage and Film. International: Cirque du Soleil, National Theatre of Cyprus, Dijon International Festival. Tony Award for Sound Design: *The Nance*. [klaxson.net](http://klaxson.net)

**MICHAEL G. CHIN** (Fight Director) is a Fight Master with The Society of American Fight Directors, one of only eighteen people to hold that distinction. He has choreographed violence and fights on Broadway, Off-Broadway, Off-Off-Broadway and in regional theaters around the country. He has taught stage combat at The Juilliard School and for The United Stuntman Association in Seattle, Mr. Chin is currently on adjunct faculty at Brooklyn College-Graduate Division and Pace University both in New York City and at Muhlenberg College in Allentown, PA. He also works as a professional actor and stuntman having acted/fought on "Blue Bloods," "Madam Secretary," "The Blacklist" and "Blindspot." He is delighted to be returning to CSC.



**DYANE HARVEY-SALAAM** (Movement Director) is a founding member and assistant to director Abdel R. Salaam of Forces of Nature Dance Theatre Company; a 39 year-old Harlem based company. Commercial credits include: "Free to Dance" (PBS); *The Wiz* (Broadway/Film); *Timbuktu!*, *Spell #7*, "Ailey Celebrates Ellington" (CBS); and the Paris Company of *Your Arms Too Short To Box With God*. Choreography for theatre: *Love's Fire* (The Acting Company); *Yerma* and The African Company Presents *Richard III* (director Reggie Montgomery); *Lavender Lizards*, *Lilac Landmines*, *Layla's Dream* (writer, Ntozake Shange; director, Dr. Mikell Pinkney); *Harriet Returns* (The Acting Company; director, Shona Tucker); *Iced Out Shackled and Chained*, *Sarah Sings A Love Story*, and *My Harlem Tis of Thee* (Blackberry Productions; director, Jeffery V. Thompson). Awards include: 2019 BESSIE nominee, 2017 BESSIE AWARD, Woman of Distinction Award, Walk A Mile In Her Shoes Award, Dance for Life Award, two AUDELCO Awards, Monarch Merit Award, Black Theatre Award, and Goddesses and Gurus Award. Ase to All who have come before.

**CARRIE MOSSMAN** (Prop Supervisor). Previous prop designs include *Pride & Prejudice*, *Discord*, *The Roads To Home*, *Fade*, and *Perfect Arrangement* (Primary Stages); *Proof of Love*, *The Way She Spoke*, *Half-Life of Marie Curie* (Audible Theatre); *Cry It Out* and *Airness* (ATL); *Out Of The Mouths Of Babes* and *The Traveling Lady* (Cherry Lane Theatre);

*The Effect* (Barrow St.); *Lost Girls* (MCC); *Hamlet, Faustus* (Classic Stage Company). Carrie received her MFA from Brandeis University.

**DAVID L. ARSENAULT** (Associate Scenic Designer). CSC as designer: *Mies Julie, The Dance of Death, Peer Gynt, Julius Caesar*. CSC as associate: *Macbeth, The Cradle Will Rock, The Resistible Rise of Arturo Ui, Fire and Air, Twelfth Night, As You Like It, Pacific Overtures, Allegro, and Passion*. Broadway (Associate): *The Color Purple* (also London and National Tour), *Les Liaisons Dangereuses, King Charles III, and Constellations*. Regional: Kennedy Center, Bay Street Theatre, George Street Playhouse, Geva Theatre, Hangar Theatre, Kitchen Theatre Company, Gulfshore Playhouse, Northern Stage, Dorset Theatre Festival, and Weston Playhouse among others. International: English Theatre Berlin. Member: USA 829. Education: Ithaca College. [DavidArsenaultDesign.com](http://DavidArsenaultDesign.com)

**SHANNON CLARKE** (Associate Lighting Designer) is thrilled to be returning to Classic Stage Company for *Dracula* and *Frankenstein*. She is a New York-based lighting designer and assistant lighting designer. She has worked as an associate lighting designer on *The Right to Be Forgotten* at Arena Stage and *Ain't No Mo'* at The Public Theater. She has worked as an assistant designer on *Behind the Sheet* at Ensemble Studio Theatre; *Carmen Jones* at

Classic Stage Company; *Skeleton Crew* and *A Doll's House* at The Huntington Theatre Company; and *The Rake's Progress* at Boston Lyric Opera.

**MEGAN SCHWARZ DICKERT** (Production Stage Manager). New York: Lincoln Center/LCT3, Atlantic, Vineyard, Playwrights Horizons, TFANA, NYTW, Page 73, Public, Clubbed Thumb (affiliated artist), WP Theater, Playwrights Realm, Play Company, Juilliard, Rattlestick, Foundry, Bedlam, Working Theater, 13P, Civilians, Flea, Builders Association, New Georges. Regional: Kennedy Center, NYSAF, Westport, Bard SummerScape, Hartford Stage, Williamstown, Long Wharf, Actors Theatre of Louisville, Trinity Rep, Adirondack Theatre Festival, Big Apple Circus, Capital Rep, and Idaho, North Carolina, Utah, and Nebraska Shakespeare Festivals. Upcoming: *sandblasted* at WP Theater/Pipeline Fest, *...what the end will be* at Roundabout. Megan is an advanced open water scuba diver and has run five marathons. [megandickert.com](http://megandickert.com)

**DIANE HEALY** (Assistant Stage Manager). Diane has been the PSM for BEDLAM on *Saint Joan*, *Hamlet*, *Pygmalion*, *Peter Pan*, *Cry Havoc!*, *Twelfth Night/What You Will*, *Sense & Sensibility*. Also in NY with: PlayOn! (OSF/CSC) TFANA, Mabou Mines; Primary Stages; Playwrights Realm; Barrow Street Theatre; Soho Playhouse; Atlantic Theater Co., LCT3, LaMama, Keen Company, The Civilians, EST. Regionally: Long Wharf Theatre, McCarter Theatre,

Bucks County Playhouse, Folger Theatre, Shakespeare & Company, Oldcastle Theatre Company. Dance & Theatre at Princeton University, Bard College, Green Mountain College, East Tennessee State University.

**TELSEY + COMPANY** (Casting). Broadway/  
Tours: *Flying Over Sunset, American Buffalo, Mrs. Doubtfire, Diana, West Side Story, Grand Horizons, Tina, The Sound Inside, Beetlejuice, Oklahoma!, To Kill a Mockingbird, Mean Girls, Frozen, Come From Away, Waitress, Hamilton, Wicked, My Fair Lady, Once on This Island, Hello, Dolly!, Anastasia*. Off-Broadway:  
Atlantic Theater Company, MCC Theater, New Group, Park Avenue Armory, Second Stage Theatre. Film: *The Glorias, The Kitchen, Mary Poppins Returns, Ben Is Back, The Greatest Showman, Into the Woods, Rachel Getting Married*. TV: "AJ and the Queen," "Perfect Harmony," "Tales of the City," "Fosse/Verdon," "NOS4A2," "This Is Us," "NCIS: New Orleans," "One Day at a Time," commercials.  
[telseyandco.com](http://telseyandco.com)

**CLASSIC STAGE COMPANY (CSC)** is committed to re-imagining classic stories for contemporary audiences. The company has been a home for New York's finest established and emerging artists to grapple with the great works of the world's repertory that speak directly to the issues of today. CSC serves an average of 35,000 audience members annually, including more than 1,000 students through its nationally

recognized education programs. Productions have been cited repeatedly by all of the major Off-Broadway theater awards including the Obie, Drama Desk, Outer Critics Circle, Drama League, Audelco, and the Lucille Lortel Award for Outstanding Body of Work. Find out more at [classicstage.org](http://classicstage.org).

# UPCOMING EVENTS

## CLASSIC CONVERSATIONS

An Evening of Song and Discussion  
with New York's Leading Actors



**MICHAEL  
CERVERIS**

Two-Time Tony Winner

**MONDAY, MARCH 2 AT 8PM**



**JUDY  
KUHN**

Four-Time Tony Nominee

**SUNDAY, MAY 17 AT 7PM**

Moderated by  
CSC Artistic Director John Doyle

See one for **\$100**

See both for **\$150**



Tickets on sale now  
at [classicstage.org](http://classicstage.org)

UP NEXT AT CSC

# ASSASSINS

MUSIC AND LYRICS BY **STEPHEN SONDHEIM**

BOOK BY **JOHN WEIDMAN**

FROM AN IDEA BY **CHARLES GILBERT, JR.**

WITH



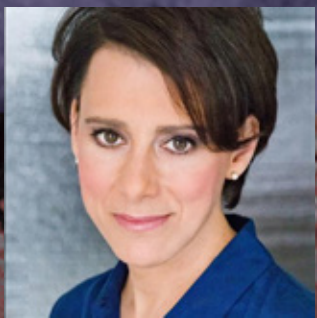
**ADAM CHANLER-BERAT**



**TAVI GEVINSON**



**ANDY GROTELUESCHEN**



**JUDY KUHN**



**STEVEN PASQUALE**



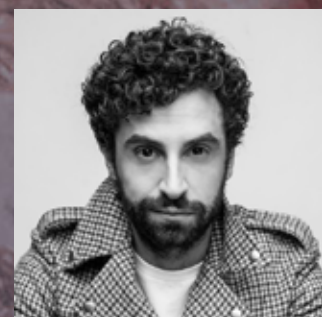
**ETHAN SLATER**



**WILL SWENSON**



**WESLEY TAYLOR**



**BRANDON URANOWITZ**

A journey through the dark side of the American dream, Stephen Sondheim and John Weidman's Tony-winning musical **ASSASSINS** explores the lives of nine men and women who either killed (or tried to kill) one of the Presidents of the United States.

DIRECTED BY **JOHN DOYLE**

**APRIL 2 - MAY 17, 2020**

[classicstage.org](http://classicstage.org)

# SEE IT IN REP

**DON'T MISS THE  
COMPANION TO *FRANKENSTEIN*,  
ALTERNATING ON THE SAME STAGE**

# DRACULA

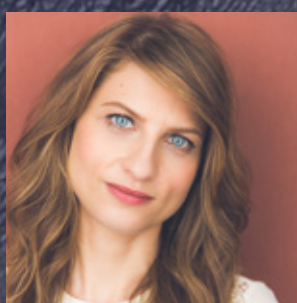
BY **KATE HAMILL**

BASED ON THE NOVEL BY **BRAM STOKER**

WITH



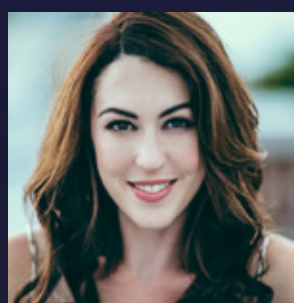
**MATTHEW  
AMENDT**



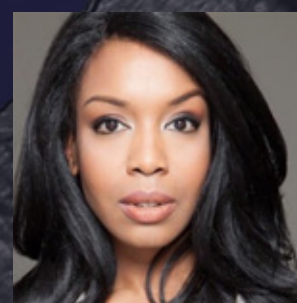
**LAURA  
BARANIK**



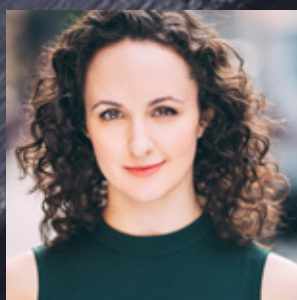
**MICHAEL  
CRANE**



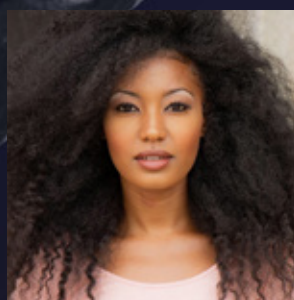
**KELLEY  
CURRAN**



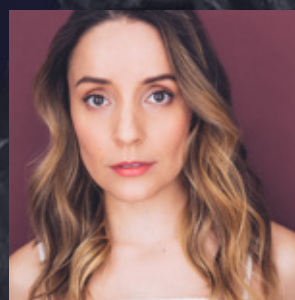
**JESSICA FRANCES  
DUKES**



**KATE  
HAMILL**



**LORI  
LAING**



**JAMIE ANN  
ROMERO**



**MATTHEW  
SALDIVAR**

Both terrifying and riotous, Kate Hamill's **DRACULA** confronts the sexism in Bram Stoker's original work and subjugates it as a smart and disquieting feminist revenge fantasy. Kate's signature style and postmodern wit upends this familiar tale of Victorian vampires and drives a stake through the heart of toxic masculinity.

DIRECTED BY **SARNA LAPINE**

**Tickets and more information  
at [classicstage.org](http://classicstage.org)**



# BECOME A PATRON



Gala Honoree Ted Chapin, Judy Kuhn, Gala Honoree Anika Noni Rose and Victoria Clark at the 2019 CSC Gala. Photo by Gregory Pace.

For more than 50 years, CSC has been committed to reimagining the classics, and our work today remains true to that fundamental idea. CSC is able to fulfill this mission through the support of its closest friends, our Patrons, and the best way to enjoy our productions is as a CSC Patron.

In recognition of your annual support, you will enjoy exclusive Patron benefits throughout the year, including complimentary tickets in prime locations for each production and invitations to special events with CSC artists. Most importantly, you will be giving back to the theater and supporting CSC's mission to make accessible, world-class classical theater in New York City today.

To learn more, please visit:  
[classicstage.org/donate](https://classicstage.org/donate)  
or call **212.677.4210 x24.**

# BECOME A PATRON

**Please consider making  
a tax-deductible gift at any level  
to become a CSC Patron today**

## **THE BARD – \$500+**

- Recognition in CSC season digital programs and website
- Invitations to special events, readings, and discussions

## **THE ROMEO – \$1,000+**

- 2 complimentary tickets to each production in our season
- Invitations to Patron Night performances and receptions

## **THE ORLANDO – \$2,500+**

- Invitations for 2 to Opening Night performances and party
- Access to Discounted Guest Tickets (2 per production)
- Complimentary drink tickets for Everyman Espresso

## **THE VIOLA – \$5,000+**

- Receive 2 additional complimentary tickets
- Receive cast-signed production poster

## **THE PROSPERO – \$10,000+**

- Access to Discounted Guest Tickets (4 per production)
- An additional 2 VIP tickets to all Opening Nights
- Invitation for two to Pre-Show Dinners with CSC artists/staff

## **THE TITANIA – \$25,000+**

- Invitation to annual Tea with John Doyle, Artistic Director
- Opportunity to sponsor an Opening Night

# CSC BOARD OF DIRECTORS

**Lynn F. Angelson, Chair**  
**Therese Steiner, First Vice Chair**  
**Barbara Marks, Second Vice Chair**  
**Donald Francis Donovan, Chair Emeritus**

## **Executive Committee**

**Paul Blackman**  
**Justin Blake**  
**Raymond DiPrinzio**  
**Daniel M. Abuhoff**  
**Carmen Chan**  
**Myra Maultasch**  
**Debra Mayer**  
**Elizabeth Newell**  
**Maeve O'Connor**  
**Kathy Robb**  
**Gail F. Stone**  
**Jennifer Stork**  
**Matthew Tague**  
**Emma Taylor**  
**Roslyn Tom**



Board Chair Lynn F. Angelson speaks at the 2019 CSC Gala. Photo by Gregory Pace.

# CSC DONORS

## **\$50,000 AND ABOVE**

Lynn & Mark Angelson  
The Angelson Family Foundation  
Edelman  
Howard Gilman Foundation  
The Hitz Foundation  
Ted & Mary Jo Shen  
The Shubert Foundation  
Harold & Mimi Steinberg Charitable Trust

## **\$25,000 - \$49,999**

Daniel M. Abuhoff & Tamsen Granger  
Roger & Brook Berlind  
The Achelis and Bodman Foundation  
The Bay and Paul Foundations, Inc.  
Donald Francis Donovan & Jennifer Lake  
Perry & Marty Granoff  
Barbara H. & Alan D. Marks  
New York City Department of Cultural Affairs  
Elizabeth Newell  
Benjamin & Donna Rosen  
Jayne Baron Sherman  
Gail Stone & Matt Fishbein  
Therese Steiner

## **\$10,000 - \$24,999**

Marc & Robyn Abrams  
Paul Blackman  
Joan S. Blaine  
Justin Blake  
Bloomberg LP  
Anna-Louise & Gregory Brown  
Ted & Joanna Chapin  
Con Edison  
Concord  
Denise Dickens & James Incognito  
Raymond A. DiPrinzio & Lisa Garson  
First Republic Private Wealth Management  
Goldman Sachs  
Horace W. Goldsmith Foundation  
Lucille Lortel Foundation  
Myra Maultasch & Adam Sherman  
Debra Mayer & Joseph Frumkin  
National Endowment for the Arts  
New York State Council on the Arts

Maeve O'Connor  
Nicola Christine Port  
Quad/Graphics  
Jordan Roth/Jujamcyn Theaters  
The Fan Fox & Leslie R. Samuels Foundation Inc.  
The Scherman Foundation  
The Dorothy Strelsin Foundation  
Sullivan & Cromwell  
Matt Tague & Ross Oliver  
Emma Taylor  
B. Thompson  
The Thompson Family Foundation  
Roslyn Tom & Mark Mason  
Chaya Albert Genesis Charitable Fund of Triangle  
Community Foundation  
Anonymous

**\$5,000 - \$9,999**

Axe-Houghton Foundation  
The Barbara Bell Cumming Foundation  
James & Natalie Davis  
The Gladys Kriebel Delmas Foundation  
Joseph J. Grano, Jr.  
Matthew & Lisa Harrington  
Bruce Horten & Aaron Lieber  
Susan Keyes & James Sulat  
Robert Kosinski & Daniel Macy  
Enid Nemy  
NETworks Presentations  
The PECO Foundation  
Laura & Gerald Rosberg  
Henry Rybicki  
Michael Tuch Foundation  
Bruce & Sandra Tully  
Andrew W. Siegel  
Anonymous

**\$2,500 - \$4,999**

Lisbeth Barron  
Janet Dewar  
Fred & Suzan Ehrman  
Joanne Flanagan  
Gary Gersh, Innovative Artists  
Bruce Haims & Judy Jackson  
Lisa Huestis & David Van Zandt  
JPMorgan Chase  
Frank & Patricia Lenti  
Theresa M. Martinac

Edwin S. Maynard & Robin L. Dahlberg  
John Orberg  
Lisa Orberg  
Playbill Incorporated  
The Richenthal Foundation  
The Jerome Robbins Foundation  
Miriam Schneider  
Finley & Patrick Shaw  
Joseph S. & Diane H. Steinberg  
Sarah Steinberg  
Jane Stine & R.L. Stine  
Jennifer & Ryan Stork

**\$1,000- \$2,499**

James Adams  
Susan Heller Anderson  
John & Elisabeth Avery  
Gail & Joseph Berardino  
Maggie & Don Buchwald  
Robin & Marc Byron  
Susan & Bruce Cohen  
Neal Cohen & Nancy Beer  
Joshua & Ako Dachs  
Michael Davidson  
Dorothy R. Davies  
Lisa M. DeAngelis & Peter M. Okin  
Matt DiCarlo  
Gary DiMauro  
William W. Donnell  
Nancy Duffy  
Ehrenkranz Partners  
Eric Falkenstein  
Jill & Howard Fife  
Robert Fleischer & Susan Ranaan  
Lori & Edward Forstein  
David Frankel & Lynn Freedman  
Franklin, Weinrib, Rudell & Vassallo  
Brian Frawley & Amy Anthony  
Bobby & Vicki Freeman  
Leonard Freifelder & Anne Easterling  
Karen & Edward Friedman Family Fund  
Kenneth Goodman  
Jacqueline Grimm  
Anne & John Hall  
Jeffrey & Jamie Harris  
Kent Harvey  
Craig & Vicki Holleman  
Alan Jones & Ashley Garrett

Robin Jones  
John Kordel Juliano  
Kathy Keneally & Tom Marshall  
Brooke Kennedy  
Drs. Luba & Richard Kessler  
Miodrag Kukrika  
The Lambs Foundation  
Warren Leight  
Leslie Lewit  
Claire Lieberwitz & Arthur Grayzel, M.D.  
Stephen Lindsay & Brett Sirota  
The Dorothy Loudon Foundation  
Carole & Bill Ludwig  
Gillian Lusins  
Bill & Jane Macan  
Brian & Florence Mahony  
Joyce Menschel  
Cobb Mixter  
Daniel A. Napolitano  
Asha & DV Nayak  
Nederlander Organization  
Elyse & Michael Newhouse  
Marilyn & Peter Oswald  
Will Packer Productions  
Amnon & Anne Parizat  
Sandy & Steve Perl binder  
Michelle Pirret  
Patricia Alford President  
Kathy & Curtis Robb  
Maura & Paul Robinson  
Anika Noni Rose  
John Rose Jr.  
Neil & Diane Rosen  
S. Gerald Saliman & Raymond Vallejo  
Barry Schwartz  
Adam Sherman  
Beverly & Arthur Shorin  
The Shubert Organization  
Donald Siskind  
Matthew Smyth  
Sara Billinghamurst Solomon  
Elizabeth Kay Spencer  
Christine Steiner  
David Stern  
Christopher Stone  
Bill Thurston  
Universal Theatrical Group  
David & Lynne Weinberg

Susan Weiner & Chris Aidun  
Stephen & Cathy Weinroth  
David Weisbrod & Margaret Simon  
Barry & Fran Weissler  
Bruce E. Whitacre/Theatre Forward  
Susan Wilen & Peter Segal  
David Williams  
Francis Williams & Keris Salmon  
Susan Yarnell  
Stuart W. Yothers & Travis Hibbs  
F. Anthony & Sally Zunino  
Sue & Burt Zwick  
David & Monica Zwirner

**\$500 - \$999**

Actors' Equity Foundation  
P. Montorio Archer  
Taffy Benjamin  
Robert Burrows  
Russ Carmel  
Daniel Castellaneta & Deborah Lacusta  
Mary Chan  
Kathleen Clark & Richard Frankel  
Gail Coleman & Saul Kupferberg  
Cathleen Collins  
Russell DaSilva  
John Doulamis  
Jodi Falco & Jeffrey Steinman  
Daniel Feder  
Anna May & Tim Feige  
Barbara Fleischman  
Stephen Foster  
Egon R. Gerard  
Collette C. Goodman  
Google  
Andrew Halliday & David Greer  
Donna & John Hardiman  
Susan Hochberg  
Jessica & Cas Holloway  
Doug Jensen & Bridget Brennan  
Chris Karagheuzoff  
The Charles & Lucille King Family Foundation  
Laurence Klurfeld  
Gary W. Kubek  
The Max and Selma Kupferberg Family Foundation  
David Levine  
Jonathan Lewis  
Nicholas W. Lobenthal



Richard & Elizabeth Mason  
Dr. Jane A. McCutcheon  
Marla Nissan  
Andrew & Anna O'Connell  
The Overbrook Foundation  
Lori & Lee Parks  
Brian Paylago  
Elizabeth Ann Payne  
Elizabeth Sanders  
Michael & Kate Schaper  
Barbara & Leonard Siegel  
Norman C. Simon  
Robert Summer  
Elwin & Rebecca Miller Sykes  
Leah & Christopher Tahbaz  
Kenneth Vittor & Judith Aisen  
Marcia & Dan Wasser  
David & Allison Womack  
Anonymous

\*Updated as of February 10, 2020



**Council on  
the Arts**



**National  
Endowment  
for the Arts**  
arts.gov

**NYC** Cultural  
Affairs



DENISE DICKENS & JAMES INCOGNITO

HAL LUFTIG & DR. STEWART ADELSON

BRA MAYER & JOSEPH FRUMKIN

EDWIN MAYNARD & ROBIN DAHLBERG

JUJAMCYN THEATERS

TOM WELLS & LEE TANNEN

JANE CONDON PRODUCTION PRODUCE P RUCHI MIKEL SOUTH/VIERTEL GROUP

**THANK YOU**

# FEATURED RESTAURANT PARTNER



The Penny Farthing

## THE PENNY FARTHING

103 Third Avenue (at 13th Street)

Before, after, or in-between shows, grab a bite around the corner from CSC at The Penny Farthing!

Ticket holders for *Dracula* and *Frankenstein* receive one free glass of wine, beer, or well drink with the purchase of any entrée. Show your ticket to your server to receive this special deal.

For reservations, email [thepenny@me.com](mailto:thepenny@me.com)



# JOHN DOYLE ARTISTIC DIRECTOR'S CIRCLE

During the 50th Anniversary Season, The John Doyle Artistic Director's Circle was established to create a fund to provide CSC with the flexibility and resources to take bold artistic risks under Artistic Director John Doyle's leadership. The Artistic Director's Circle exists to recognize our closest friends who have given their support directly to John's vision for CSC for the years ahead.

Members of The John Doyle Artistic Director's Circle are acknowledged with a place for their name on the doors to our theater, designed by David Rockwell.



For more information or to make a gift to join The John Doyle Artistic Director's Circle and have your name on our theater's doors, please contact Oliver Pattenden, at [oliver.pattenden@classicstage.org](mailto:oliver.pattenden@classicstage.org) or **212.677.4210 x24.**

# JOHN DOYLE ARTISTIC DIRECTOR'S CIRCLE

Marc & Robyn Abrams  
Dan Abuhoff and Tamsen Granger  
The Angelson Family Foundation  
Kenneth G. Bartels & Jane Condon  
Paul Blackman  
Justin Blake  
Luigi Caiola & Sean McGill  
Carole Chazin, in memoriam  
CSC Board Alumni  
Becca Davies & Jeremy Kramer  
The Davis/Motise Family  
Jamie DeRoy  
Denise Dickens & James Incognito  
Gary DiMauro  
Ray DiPrinzio & Lisa Garson  
Donald Francis Donovan & Jennifer Lake  
Molly Doyle, in memoriam  
The Doylies  
Mildred & Joseph F. Farrell, in memoriam  
Louise Firestone  
Joan Fox  
Jacquelyn Grimm  
Lisa & Matthew Harrington  
Steven L. Holley &  
John W. Hamilton IV  
Jujamcyn Theaters  
John Kander  
Riki Kane Larimer  
Hal Luftig & Dr. Stewart Adelson  
Barbara & Alan D. Marks  
Debra Mayer & Joseph Frumkin

Edwin Maynard & Robin Dahlberg  
Elizabeth Newell  
Maeve O'Connor  
Nicola Port  
Peter Quick  
The Rockwell Group  
Benjamin & Donna Rosen  
Daryl Roth  
Evan Sacks  
Andrew W. Siegel  
Christine Steiner  
Therese Steiner  
Ed Stern, in memoriam  
Gail Stone & Matt Fishbein  
Mr. James Sulat & Ms. Susan Keyes  
Emma Taylor  
Roslyn Tom and Mark E. Mason  
The Baruch/Frankel/  
Routh/Viertel Group  
Barry & Fran Weissler  
Tom Wells & Lee Tannen  
Robbie Wilson



# BOOKS BY THE FOOT

creates one-of-a-kind, custom book collections and rentals for interior decorators, set designers, commercial spaces, and personal libraries.

Let our staff put together the collection you've always wanted!

[www.strandbooks.com/books-by-the-foot](http://www.strandbooks.com/books-by-the-foot)

email: [bbtf@strandbooks.com](mailto:bbtf@strandbooks.com)

Strand Book Store  
located down the street at 12th and Broadway

# **STAFF FOR FRANKENSTEIN**

---

Assistant Director ..... **COLEMAN RAY CLARK**  
Director of Production ..... **CHEYENNE DOCZI**  
Technical Director ..... **BUTCH FOLEY**  
Production Electrician ..... **TIM NEGGIE**  
Production Audio Supervisor ..... **LAUREN KROHN**  
Light Programmer ..... **GRIFFYD COLE**  
Wardrobe Supervisor ..... **EMMA BLAKE HANDLER**  
Assistant Sound Designer  
and Light/Sound Board Operator ... **WHITAKER GARDNER**  
Light/Sound Board Operator ..... **W. ALAN WATERS**  
Videographer ..... **TRISTAN NASH**

## **Casting:**

Telsey + Company:

Bernard Telsey CSA, William Cantler CSA, David Vaccari CSA,  
Bethany Knox CSA, Craig Burns CSA, Tiffany Little Canfield CSA,  
Rachel Hoffman CSA, Patrick Goodwin CSA, Karyn Casl CSA,  
Kristina Bramhall, Adam Caldwell CSA, Josh Einsohn CSA,  
Rachel Nadler, Rachel Minow, Rikki Gimelstob CSA,  
Ryan Bernard Tymensky CSA, Rebecca Scholl CSA, Scott Galina,  
Madison Sylvester, Lauren Harris CSA, Laura Wade CSA,  
Ally Kiley, Kristian Charbonier, Destiny Lilly CSA,  
Lily Schneider, Meghan Ryan, Yoonji Jang, Samantha Marzec,  
Devin Rossinsky, Amelia Rasche McCarthy CSA,  
Jade Hardy, Brian Sutow

## **Credits:**

Scenic items constructed by Tom Carroll Scenery. Scenic painting by Infinite Scenic. Lighting Equipment provided by Hayden Productions. Audio Equipment provided by Five Ohm Productions. Special Thanks to Anything But Costumes.

# Special Thanks:

The Staff of TheatreMania/OvationTix  
Show-Score.com  
Strand Books  
The Penny Farthing  
Creative Center at Manhattan Theatre Club  
Beth Prevor, Hands On  
Meyer Sound

## CSC ADMINISTRATIVE STAFF

---

**John Doyle,**  
Artistic Director

**Toni Marie Davis,**  
Chief Operating Officer/GM

**Sheree Grate,** House Manager

**Phil Haas,** Director of Marketing & Communications

**Kara Hogan,** Development Assistant

**Rachael Langton,** Digital Marketing Associate

**Brendan McNamara,** Assistant General Manager

**Michelle Maccarone,** Box Office Assistant

**Mike Mroch,** Facilities Supervisor

**Michael Mullen,** Education Coordinator

**Oliver Pattenden,** Director of Development

**Lacy Reily,** Company Manager

**Graham Shelton,** Audience Services Manager

**Ryan Skerchak,** House Manager

## SPECIAL SERVICES

---

**Schall & Ashenfab,** CPAs, LLC, Auditor

**Joan Marcus,** Company Photographer

**Robert Goldberg,** Yorke Construction, Construction

**Gallagher,** Insurance

**Turner P. Smith,** Legal Counsel

**OvationTix,** Ticket Services

**Capacity Interactive,** Digital Marketing



THE ACTORS AND STAGE MANAGERS EMPLOYED IN  
THIS PRODUCTION ARE MEMBERS OF ACTORS' EQUITY  
ASSOCIATION, THE UNION OF PROFESSIONAL ACTORS  
AND STAGE MANAGERS IN THE UNITED STATES



United Scenic Artists - Local USA 829  
of the IATSE represents  
the Designers & Scenic Artists  
for the American Theatre



The Director and Choreographer are members of  
the STAGE DIRECTORS AND CHOREOGRAPHERS  
SOCIETY, a national theatrical labor union.