



# MACBETH

**CSC**



**Classic Stage Company**  
JOHN DOYLE, Artistic Director  
TONI MARIE DAVIS, Chief Operating Officer/GM  
presents

# MACBETH

BY **WILLIAM SHAKESPEARE**

WITH  
**BARZIN AKHAVAN, RAFFI BARSOUMIAN, NADIA BOWERS,  
N'JAMEH CAMARA, ERIK LOCHTEFELD, MARY BETH PEIL,  
COREY STOLL, BARBARA WALSH, ANTONIO MICHAEL WOODARD**

COSTUME DESIGN  
**ANN HOULD-WARD**

LIGHTING DESIGN  
**SOLOMON WEISBARD**

SOUND DESIGN  
**MATT STINE**

FIGHT DIRECTOR  
**THOMAS SCHALL**

PROPS SUPERVISOR  
**ALEXANDER WYLIE**

ASSOCIATE  
SCENIC DESIGN  
**DAVID L. ARSENAULT**

ASSOCIATE  
COSTUME DESIGN  
**AMY PRICE**

ASSOCIATE  
SOUND DESIGN  
**AJ SURASKY-YSASI**

CASTING  
**TELSEY + COMPANY**  
**KARYN CASL, CSA**  
**DESTINY LILLY**

PRESS  
REPRESENTATIVES  
**BLAKE ZIDELL AND  
ASSOCIATES**

PRODUCTION  
STAGE MANAGER  
**BERNITA ROBINSON**

ASSISTANT  
STAGE MANAGER  
**JESSICA FLEISCHMAN**

DIRECTED AND DESIGNED BY  
**JOHN DOYLE**

# MACBETH

---

(in alphabetical order)

Macduff, Captain..... **BARZIN AKHAVAN**  
Malcolm ..... **RAFFI BARSOUMIAN**  
Lady Macbeth ..... **NADIA BOWERS**  
Lady Macduff, Gentlewoman ..... **N'JAMEH CAMARA**  
Banquo, Old Siward ..... **ERIK LOCHTEFELD**  
Duncan, Old Woman..... **MARY BETH PEIL**  
Macbeth..... **COREY STOLL**  
Ross ..... **BARBARA WALSH**  
Fleance, Young Macduff, Young Siward ..... **ANTONIO MICHAEL WOODARD**

All other roles are played by members of the company.

Fight Captain ..... **ERIK LOCHTEFELD**

All performers in this production are members of Actors' Equity Association, the Union of Professional Actors and Stage Managers in the United States.

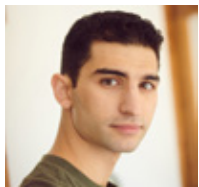
*The use of any recording device, either audio or video, and the taking of photographs, either with or without flash, is strictly prohibited.*

*Please silence all electronic devices. The use of cell phones during the performance is prohibited by New York City law.*

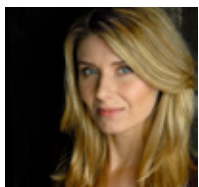
# WHO'S WHO



**BARZIN AKHAVAN.** Broadway: *Network* (Belasco). NYC: *Hamlet* (Waterwell). International Tour: *Aftermath* (Arktype). Regional: *Pericles* (Guthrie and Folger Theatre), *Arabian Nights* (Arena, Berkeley Rep, Looking Glass), *A Thousand Splendid Suns* (World Premiere, ACT SF and Theatre of Calagary), *Shakespeare in Love* (Baltimore Center Stage and Cincinnati Playhouse), *The Kite Runner* (World Premiere, San Jose Rep and Arizona Theatre Company), *Twelfth Night* (Seattle Rep), Five seasons with the Oregon Shakespeare Festival, Four seasons with the Lake Take Shakespeare Festival, and one season with the Colorado Shakespeare Festival. Film and TV credits include *Joyful*, "Smash," "Law and Order CI".

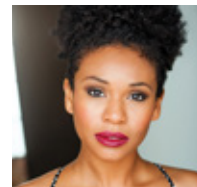


**RAFFI BARSOUMIAN.** Broadway: *Les Liaisons Dangereuses*. Other New York theatre: *Privacy*, *Pericles* (The Public Theater); *King Lear*, *Arok of Java* (Exit, Pursued By a Bear). Los Angeles: *Henry IV* (Shakespeare Center of L.A.); *Guards at the Taj* (The Geffen Playhouse); *Red Noses* (The Actor's Gang); *Zoo Story*, *Counting the Ways* (Luna Playhouse). Regional: *The Count of Monte Cristo*, *Antony and Cleopatra*, *King Lear*, *Cymbeline*, *Troilus and Cressida*, *Henry V* (Oregon Shakespeare Festival); *The Taming of the Shrew*, *The Merchant of Venice*, *Henry V* (American Shakespeare Center); *As You Like It*, *King John* (Actor's Shakespeare Company); *Restoration Comedy*, *Don Juan* (Stanford Summer Theater). International: *Sedimenti* (Compagnie Du Faubourg); Globe Theater International Fellowship. Television: "The Code" (CBS), "Shameless" (Showtime), "The Vampire Diaries" (CW). Training: École Jacques Lecoq, Carnegie Mellon University.

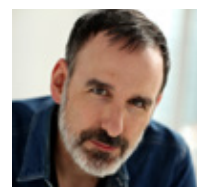


**NADIA BOWERS.** Broadway credits: *The Farnsworth Invention*, *Doubt*, and *Metamorphoses*. Off-Broadway:

most recently, Aaron Posner's *Life Sucks* (Wheelhouse). Others: Rajiv Joseph's Obie-winning *Describe the Night* (Atlantic Theater), Mona Mansour's *The Way West* (Labyrinth), *Julius Caesar* (2000 production, Public Theater NYSF). TV: "Orange is the New Black," "Quantico," "The Strain," "NCIS," every incarnation of "Law and Order." Film: upcoming: *The Outside Story*, *Unintended*, *Josie and Jack*, *The Drummer*. As a writer, Nadia's piece "Dear Dealer" was featured on *This American Life* and a shorter version in TIME online. She's a SPACE on Ryder Farm 2019 Creative Resident. [nadiabowers.com](http://nadiabowers.com)



**N'JAMEH CAMARA.** Recent credits include: *The Color Purple* (First National Tour); *The Color Purple* (Paper Mill Playhouse); *JUNK* (Milwaukee Rep); *X: Or, Betty Shabazz vs. The Nation* (World Premiere); *Julius Caesar* (Off-Broadway), *Up Here* (La Jolla Playhouse). Selected narrations on Audible include: *Fumbled*, *Harbor Me*, and *The Long Ride*. She is currently writing a novel #thenameofusbook. MFA: UC San Diego. Instagram: @lady\_njay



**ERIK LOCHTEFELD.** CSC debut. Broadway: *King Kong*, *Misery*, *Metamorphoses*. Off-Broadway: *A Walk with Mr. Heifetz* (Primary Stages); *Napoli*, *Brooklyn* (Roundabout); *The Light Years* (Playwrights Horizons); *A Funny Thing...of NYC* (MCC); *Stupid F\*\*\*ing Bird* (The Pearl); *Small Mouth Sounds* (Ars Nova); *Powerhouse* (New Ohio); *Row After Row* (Women's Project); *Tamar of the River* (Prospect Theatre); *Melancholy Play* (13P); *February House* (Public Theater). Regional: *Unknown Soldier* (Williamstown), *Hamlet* (Yale Rep), *Candide* (Goodman, Shakespeare Theater, Huntington), as well as work with Long Wharf, The O'Neill, Hartford Stage, Two River, McCarter, Centerstage, Cincinnati Playhouse, Lookingglass, Chicago Shakespeare, Intiman, Seattle Rep, Berkeley

# WHO'S WHO

Rep, Cal Shakes, Mark Taper Forum. TV/Film: "Madam Secretary," "The Marvelous Mrs. Maisel," "Law & Order." He is married to playwright Laura Eason. eriklochtefeld.com

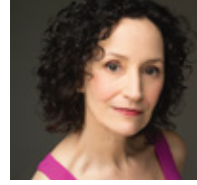


**MARY BETH PEIL.** Broadway: *Anastasia* (Tony, Drama Desk, and Outer Critics Award nominations); *Les Liaisons Dangereuses*; *The Visit*; *Follies*; *Women on the Verge...*; *Sunday in the Park...*; *Nine*; *The King and I* (Tony nomination). Off-Broadway: many productions with Atlantic Theater (ensemble member and Obie winner); *Cheever Evening*, *Later Life* (Playwrights Horizons); *First Lady Suite* (Transport Group); *Sylvia* (MTC); *Hedda Gabler* (NYTW). Regional: Hartford Stage, La Jolla Playhouse, Arena Stage, About Face, Long Wharf, Yale Rep, Kennedy Center. TV: "The Village" (Gwendolina); "Katy Keene" (Mrs. Lacey); "The Good Wife" (Jackie); "Dawson's Creek" (Grams); "Law & Order: SVU"; "The Fringe." Film: *The Song Of Sway Lake*, *Here and Now*, *Collateral Beauty*, *The Contest*, *Mirrors*, *The List*, *Flags of Our Fathers*, *The Reagans*, *The Stepford Wives* (2004), and *The Odd Couple II*.



**COREY STOLL** was recently seen playing Buzz Aldrin in the feature film *First Man*. He will soon be seen in Steven Spielberg's *West Side Story*, "The Sopranos" pre-quel *The Many Saints of Newark*, and *Torture Report*. Past films include *Midnight in Paris* (Independent Spirit Nomination), *Ant-Man*, *The Seagull*, and *This is Where I Leave You*. On television, Corey is a Golden Globe nominee for his performance on "House of Cards." Other roles include "The Romanoffs," "The Strain," "Homeland," "Girls," and upcoming roles on "The Deuce," Ryan Murphy's new limited series "Ratched," and Channel 4's "Baghdad Central." In the theater, Corey recently played lead roles in *Othello*, *Julius Caesar*,

and *Plenty* for the New York Shakespeare Festival/Public Theater. Originally from New York, Corey has an MFA from NYU/Tisch and currently lives in Brooklyn.



**BARBARA WALSH.** Broadway: *Falsettos* (Tony, Drama Desk, Drama League noms, LA Ovation Award), *Company* (Drama Desk, Drama League noms.), *Hairspray*, *Big*, *Ragtime* (Chicago company), *Blood Brothers*, *Nine*, *Rock 'N Roll! (The First 5,000 Years)*. Off-Broadway: *Summer and Smoke* (Transport Group and CSC); *Three Days to See*, *Normal* (Transport Group); *First Daughter Suite* (Public Theater). Regional: *Master Class* (Paper Mill Playhouse), *Carrie* (Studio Theatre, Helen Hayes Award). Film/TV: *Life With Mikey*, *Company* (PBS), "Law and Order," "Law and Order: Criminal Intent," "All My Children," "One Life To Live."



**ANTONIO MICHAEL WOODARD.** CSC debut. Regional: *A Human Being*, *of A Sort* (Williamstown Theatre Festival); *Ragtime* (Trinity Rep); *The Amen Corner*, *Mississippi Goddamn* (Pyramid Theatre Company). Other: *Ma Rainey's Black Bottom* (Pure Artistry Café); *Trippin' Over Roots* (Rites and Reason Theatre); *Crowns*, *The Color Purple*, *The Piano Lesson* (Leila Barlow Theatre). Awards: Cloris Leachman Award Nominee for Best Performance by an Actor in Leading Role, Irene Ryan Best Actor Finalist KCACTF Region IV, Faculty Senate Award of Excellence. Education: MFA Brown University/Trinity Rep; BA Alabama State University. Find More: Instagram: @a.michaelwoodard or being-amw.com. Proverbs 18:16

**JOHN DOYLE** (Director and Scenic Designer). CSC: *Passion*, *Allegro*, *Peer Gynt*, *Dead Poets Society*, *Pacific Overtures* (Drama Desk nom. Best Musical Revival), *As You Like It*, *Fire and Air*, *Carmen Jones* (Lucille Lortel

# WHO'S WHO

---

Award for Outstanding Revival, nominee for Outstanding Director; Drama Desk nominee for Best Musical Revival and Director of a Musical; Drama League nominee for Outstanding Revival of a Musical) *The Resistible Rise of Arturo Ui*, *The Cradle Will Rock*. Broadway: *Sweeney Todd* (Tony and Drama Desk Awards for Best Director of a Musical), *Company* (Tony Award for Best Musical Revival), *A Catered Affair* (Drama League Award for Best Musical Production), *The Visit* (Tony nom. for Best Musical), *The Color Purple* (Tony Award for Best Musical Revival, Drama Desk Award for Best Director of a Musical). Off-Broadway: *Wings* (Second Stage Theatre); *Road Show* (Public Theater); *Where's Charley?*, *Irma La Douce* (Encores!). Regional: *Kiss Me*, *Kate* (Stratford Festival); *The Caucasian Chalk Circle* (ACT); *Merrily We Roll Along*, *The Three Sisters* (Cincinnati Playhouse in the Park); *Ten Cents a Dance* (Williamstown); *The Exorcist* (L.A.). In the U.K., John Doyle has been artistic director of four regional theaters. U.K. includes: *The Gondoliers*, *Mack and Mabel* (West End); *A Midsummer Night's Dream* (Regent's Park); *Oklahoma!* (Chichester); *Amadeus* (Wilton's Musical Hall). Opera includes: *Madama Butterfly* (Grange Park), *Lucia di Lammermoor* (Houston/La Fenice/Sydney Opera House), *Peter Grimes* (Metropolitan Opera), *The Rise and Fall of the City of Mahogany* (LA Opera). Film: *Main Street*. John Doyle is Artistic Director of CSC.

**ANN HOULD-WARD** (Costume Designer). CSC: *The Cradle Will Rock*, *The Resistible Rise of Arturo Ui*, *Carmen Jones*, *Passion*, *Allegro*, *Peer Gynt*, *Dead Poets Society*, *Pacific Overtures*, *As You Like It*, *Fire and Air*. Select Broadway: *The Color Purple*, *The Visit*, *The People in the Picture*, *A Free Man of Color* (Drama Desk nom.), *A Catered Affair* (Drama Desk nom.), *Beauty and the Beast* (Tony Award), *Into the Woods* (Tony and Drama Desk noms), *Falsettos*, *Sunday in the Park With George* (Tony and Drama Desk noms),

*Saint Joan*, *Little Me*. Other Off-Broadway: *Fiddler on the Roof* In Yiddish, *Notes from the Field*, *The Blue Flower*, *Russian Transport*, *Road Show*, *Lobster Alice*, *Cymbeline*. Ms. Hould-Ward's work can be seen in over 35 international companies of *Beauty and the Beast*, and her other designs are featured in shows all over the world. More than 100 regional theater credits. Recipient of the Fashion Institute of Technology's Patricia Zipprodt Award.

**SOLOMON WEISBARD** (Lighting Designer) is an Oregon-born lighting designer for all types of performance. With director Robert Wilson, international collaborations include *Otello* (Festspielhaus Baden Baden, Germany); *Il Trovatore* (Teatro Comunale di Bologna and Teatro Regio di Parma, Italy); and *Oedipus* (Ancient Theatre of Epidavros, Greece; Ancient Theatre of Pompeii, Teatro Olimpico di Vicenza, and Teatro Mercadante di Napoli, Italy). Selected Off-Broadway: *Duat* (Soho Rep); *Men on Boats* (World Premiere, Playwrights Horizons/Clubbed Thumb); *America Is Hard to See* (Lifejacket/HERE); The Film Society (Keen); *Cherry Smoke* (Working Theatre); and four productions with The Barrow Group. Regional theater: Arden, Berkshire Theatre Festival, Magic, Portland Center Stage, Portland Stage, Quintessence, Westport Country Playhouse, Yale Rep. In contemporary dance, he's designed pieces with Alethea Adsitt, Jennifer Archibald, Joshua Beamish/MOVE, Jonah Bokaer, Christine Bonansea, Ximena Garnica/Leimay, Lane Gifford, LoudHound Movement, Ofelia Lore de Mola, Patricia Noworol, Patrick Lovejoy, Martha Graham Dance Company, Belinda McGuire, Stefanie Nelson, and four major works as associate set designer with Bill T Jones. MFA: Yale School of Drama. [solweisbard.com](http://solweisbard.com)

**MATT STINE** (Sound Designer). CSC: *The Resistible Rise Of Arturo Ui*, *Fire And Air*, *The Liar*, *Dead Poets Society*, *Nathan The Wise*,

# WHO'S WHO

---

*Mother Courage And Her Children*. Other Broadway and Off-Broadway credits include: *Moulin Rouge!* (Music Producer), *Beetlejuice* (Music Producer), *Sweeney Todd* (Barrow Street Theatre), *Misery* (Music Producer), *Here Lies Love* (Music Producer), *The Tempest* (Music Producer, Delacorte Theater), *Love's Labour's Lost* (Music Supervisor, Delacorte Theater). 27sound.com

**THOMAS SCHALL** (Fight Director). Broadway: Over ninety shows... *King Lear*, *True West*, *The Ferryman*, *To Kill A Mockingbird*, *Network*, *Angels in America*, *The Crucible*, *The Present*, *The Front Page*, *Blackbird*, *Jitney*, *Romeo and Juliet*, *Of Mice and Men*, *Venus in Fur*, *War Horse*, *Death Of A Salesman*, *Mary Stuart*, *A View from the Bridge*. The Public Theater: *Hamlet*, *Othello*, *The Low Road*, *Richard III*, *Titus Andronicus*. New York Theater Workshop: *Red Speedo*, *Othello*. MTC: *The Cost of Living*, *Murder Ballad*. Park Ave. Armory: *The Hairy Ape*. Met Opera: *Nozze De Figaro*, *Il Trovatore*, *Tosca*, *Samson Et Dalila*.

**DAVID L. ARSENAULT** (Associate Scenic Designer). CSC as designer: *Mies Julie*, *The Dance of Death*, *Peer Gynt*, *Julius Caesar*. CSC as associate: *The Cradle Will Rock*, *The Resistible Rise of Arturo Ui*, *Fire and Air*, *Twelfth Night*, *As You Like It*, *Pacific Overtures*, *Allegro*, and *Passion*. Broadway (Associate): *The Color Purple* (also London and National Tour), *Les Liaisons Dangereuses*, *King Charles III*, and *Constellations*. Regional: Kennedy Center, Bay Street Theatre, George Street Playhouse, Geva Theatre, Hangar Theatre, Kitchen Theatre Company, Gulfshore Playhouse, Northern Stage, Dorset Theatre Festival, and Weston Playhouse among others. International: English Theatre Berlin. Member: USA 829. Education: Ithaca College. DavidArsenaultDesign.com

**AMY PRICE** (Associate Costume Designer). CSC: *The Cradle Will Rock*, *The Resistible*

*Rise of Arturo Ui*, *Carmen Jones*. Broadway associate/assistant credits include: *Time and the Conways*, *Sunset Boulevard*, *Fun Home*, *Noises Off*, *School of Rock*, *Motown the Musical*. Off-Broadway: *Pride and Prejudice* (HVSF and Primary Stages); *Do I Hear a Waltz*, *The Wild Party* (Encores).

**DALLAS ESTES** (Assistant Lighting Design) is a Brooklyn-based lighting designer. Design credits: 59E59, The Performing Garage, Access Theater, The Gamm Theater, and site-specific works in New York and Brooklyn. Assistant scenic and lighting credits: the Brooklyn Academy of Music, Theatre for a New Audience, The Public Theater, Opera Philadelphia, The Old Globe Theater, and Trinity Repertory Co. Dallas has a BA from Brown University and an MFA from NYU Tisch Design for Stage and Film.

**AJ SURASKY-YASASI** (Associate Sound Designer) is a New York-based Sound Designer. CSC: *The Resistible Rise of Arturo Ui*, *Fire & Air*, *The Liar*, *Dead Poet's Society*. Other recent credits include: *Worse Than Tigers* (New Ohio Theater), *Bengal Tiger At The Baghdad Zoo* (Brooklyn College), *Belleville* (Brooklyn College). Recent Assistant/Associate Design credits: *The Hard Problem* (Lincoln Center Theater), *Haruki Murakami's Sleep* (Ripe Time), *In the Blood* (Signature Theater), *Sweeney Todd* (Barrow Street Theatre), *The Low Road* (Public Theater). Recent awards include: Innovative Theater award for Outstanding Sound Design for *Worse Than Tigers*. AJ received his BFA from Carnegie Mellon.

**ALEXANDER WYLIE** (Props Supervisor) is thrilled to be working on *Macbeth*. His most recent credits include: Classic Stage Company: *The Dance of Death*, *Mies Julie*. The Public: *Soft Power*; Mobile Unit: *The Tempest*; *Ain't No Mo'*; Mobile Unit: *A Midsummer Night's Dream*; *Gospel at Colonus*. BCEFA: *Broadway Bares 2019*. Ars

# WHO'S WHO

---

Nova: *Dr. Ride's American Beach House*. New York Theatre Workshop: *runboyrun & In Old Age*. MCC: *The Light*. Playwrights Realm: *The Revolving Cycles Truly* and *Steadily Roll'd*. The Acting Company: *X: Or, Betty Shabazz v. The Nation*. MFA: UNC School of the Arts. Website: alexanderwylie.com

**BERNITA ROBINSON** (Production Stage Manager) is thrilled to return to the Classic Stage Company. Previous CSC Productions: PSM for *The Cradle Will Rock*, *The Resistible Rise of Arturo Ui*, and *Carmen Jones*. Broadway credits include *Ragtime* (original), *Thurgood*, *Man of La Mancha* (revival), *A Moon for the Misbegotten* (revival), *Aida*, *Beauty and the Beast*, among others. Regional theatre credits include Alabama Shakespeare, Pioneer Theater, Kansas City Rep, and Casa Manana – productions of *Ring of Fire*, *A Few Good Men*, *Evita* and the world premiere of *Roof of the World*. Off-Broadway productions at Signature, Playwrights Horizons, Primary Stages, among others. Member of AEA National Council.

**JESSICA FLEISCHMAN** (Assistant Stage Manager). Credits include National Tours: *Mean Girls*, *Jersey Boys*. Off-Broadway: *Jersey Boys* (New World Stages); *Cyrano* (The New Group); *Moscow x6* (MCC); *The Resistible Rise of Arturo Ui*, *Fire and Air*, (Classic Stage); *King Liz*, *The Other Thing* (2ST); *Red Eye of Love* (Amas); *Fruiting Bodies* (Ma-Yi); *Normativity* (NYMF). Opera: *Piramo e Tisbe* (Little Opera Theatre of NY). Regional: *Where Storms Are Born* (Williamstown Theatre Festival). Developmental: *The Heart of Rock and Roll*, *The Tale of Despereaux*; *Unmasked*. Proud graduate of Penn State. Jessica-Fleischman.com

**TELSEY + COMPANY** (Casting). Broadway/ Tours: *West Side Story*, *Tina*, *Linda Vista*, *Beetlejuice*, *Oklahoma!*, *To Kill a Mockingbird*, *Mean Girls*, *Frozen*, *Come From Away*, *Waitress*, *Hamilton*, *Wicked*, *My Fair Lady*, *Once on This Island*, *Hello*,

*Dolly!*, *Anastasia*, *Charlie and the Chocolate Factory*. Off-Broadway: Atlantic Theater Company, MCC Theater, New Group, Park Avenue Armory, Second Stage Theatre. Film: *The Kitchen*, *Mary Poppins Returns*, *Ben Is Back*, *The Greatest Showman*, *Into the Woods*, *Rachel Getting Married*. TV: "Tales of the City," "Fosse/Verdon," "NOS4A2," "This Is Us," "NCIS: New Orleans," "One Day at a Time," "Rent," commercials. telseyandco.com

**CLASSIC STAGE COMPANY** (CSC) is committed to re-imagining classic stories for contemporary audiences. The company has been a home for New York's finest established and emerging artists to grapple with the great works of the world's repertory that speak directly to the issues of today. CSC serves an average of 35,000 audience members annually, including more than 4,000 students through its nationally recognized education programs. Productions have been cited repeatedly by all of the major Off-Broadway theater awards including the Obie, Drama Desk, Outer Critics Circle, Drama League, Audelco, and the Lucille Lortel Award for Outstanding Body of Work.



# UP NEXT AT CSC

**TWO NEW ADAPTATIONS  
PERFORMING IN REPERTORY**

## DRACULA

BY **KATE HAMILL**

BASED ON THE NOVEL BY **BRAM STOKER**

DIRECTED BY **SARNA LAPINE**

## FRANKENSTEIN

BY **TRISTAN BERNAYS**

BASED ON THE NOVEL BY **MARY SHELLEY**

DIRECTED BY **TIMOTHY DOUGLAS**

A thrilling new repertory cycle will bring to life two legendary Gothic nightmares. Widely known as a pair of macabre fantasies about blood-sucking vampires and man-made monsters, these chilling stories more truly scratch at the fundamental human fears of love and betrayal, while exposing the even truer horrors of basic human nature.

**JANUARY 14 - MARCH 8, 2020**

**CSC**

Tickets and info at [classicstage.org](http://classicstage.org)

# MANY MACBETHS

---

“**Tomorrow**, and **tomorrow**, and **tomorrow** creeps in this petty pace from **day** to **day**...”

“**Double, double** toil and trouble. Fire burn, and cauldron bubble.”

“What’s **done** cannot be **undone. To bed, to bed, to bed.**”

Repetition echoes throughout the text of Shakespeare’s *Macbeth*. This season, New York theatergoers may find these familiar lines even more repetitive than usual as a wide array of *Macbeth*-inspired offerings can be found in theaters across the city, well beyond the brick walls here at CSC.

If you prefer your Thane of Cawdor singing, you can enjoy the Verdi opera at The Met or take in the world premiere of *Scotland, PA*, a modernized musical version, based on the 2001 cult film of the same name, at Roundabout Theatre Company. Another adaptation, the long-running immersive *Sleep No More*, will celebrate its ninth year Off-Broadway in March. And later this season, Primary Stages will mount *Peerless*, a retelling set amongst the cutthroat world of college admissions.

“The Scottish Play” seems to be everywhere today (conspicuously so, even for one of Shakespeare’s oft-revived tragedies.) Given the current chaotic state of international, national, and even local politics, it’s easy to pass off the overabundance of these productions as mere social commentary. For many, *Macbeth* feels more visceral today than it ever has before – but that sentiment may not be entirely warranted because *Macbeth* has almost always been of-the-moment.

Simply put, this play is about power – how power corrupts, how we choose to gain power, and what we do with power once we’ve attained it. None of these thoughts are new in 2019 and these notions felt just as instinctive when the play was first performed in 1606 under the reign of King James I. (Quick historical note: King James was the son of Mary, Queen of Scots. After becoming the King of Scotland in 1567, James eventually became the combined King of England, Scotland, and Ireland when all three crowns were united in 1603 following the death of Elizabeth I. Issues stemming from the union of these crowns still reverberate today.)

Throughout time, populations around the world have continually found themselves at odds with their leaders. The misuse of power and the desire to attain it, both personal and political, saturates history and the current headlines. *Macbeth* may be historical, it may be shockingly similar to whatever we’ve just read in the news, or it might actually be both. But more than anything else, the story of *Macbeth* is deeply and universally human. Politics aside, *Macbeth* speaks to all of us on a personal level and that is what keeps us returning to this particular tale time and time again.

Thank you for choosing our *Macbeth* at CSC. We hope to see you again later this season.

–**Phil Haas**, Director of Marketing & Communications

# OUR 2019-2020 SEASON

OCTOBER 10 - DECEMBER 15, 2019

## MACBETH

BY WILLIAM SHAKESPEARE

DIRECTED BY JOHN DOYLE

A terrifyingly prophetic tale of revenge, murder, and madness, **MACBETH** ominously traces the fallout when the darkest side of humanity cheats its way into a position of power. Often referred to as "The Scottish Play" by superstitious theatergoers due to the purported witchcraft found within its text, **MACBETH** is one of Shakespeare's bloodiest, scariest, and yet, most popular tragedies.

JANUARY 14 - MARCH 8, 2020

## DRACULA

BY KATE HAMILL

DIRECTED BY SARNA LAPINE

## FRANKENSTEIN

BY TRISTAN BERNAYS

DIRECTED BY TIMOTHY DOUGLAS

TWO NEW ADAPTATIONS IN REPERTORY

BASED ON NOVELS BY BRAM STOKER AND MARY SHELLEY

In winter of 2020, a thrilling new repertory cycle will bring to life two legendary Gothic nightmares, **DRACULA** and **FRANKENSTEIN**. Widely known as a pair of macabre fantasies about blood-sucking vampires and man-made monsters, these chilling stories more truly scratch at the fundamental human fears of love and betrayal, while exposing the even truer horrors of basic human nature.

APRIL - JUNE, 2020

## ASSASSINS

MUSIC AND LYRICS BY STEPHEN SONDHEIM

BOOK BY JOHN WEIDMAN

FROM AN IDEA BY CHARLES GILBERT, JR.

DIRECTED BY JOHN DOYLE

A journey through the dark side of the American dream, Stephen Sondheim and John Weidman's Tony-winning musical **ASSASSINS** explores the lives of nine men and women who either killed (or tried to kill) one of the Presidents of the United States. From John Wilkes Booth to Lee Harvey Oswald and beyond, the stories of our country's most successful and would-be assassins intersect in unexpected ways, creating a powerful, yet unnervingly funny look at some of the most shocking moments in US history.

# OUR 2019-2020 CLASSIC CONVERSATIONS

## CLASSIC CONVERSATIONS

AN EVENING OF SONG AND DISCUSSION  
WITH NEW YORK'S LEADING ARTISTS



**MARY BETH PEIL**



**BARBARA WALSH**

AND

A Duo of Tony-Nominees  
Sunday, December 8 at 7pm



**MICHAEL CERVERES**

Two-Time Tony Winner  
Monday, February 24 at 8pm



**JUDY KUHN**

Four-Time Tony Nominee  
Sunday, May 17 at 7pm

Complementing our mainstage productions, these **one-night-only** events offer a glimpse into the lives and careers of some of today's foremost musical theater artists, as they discuss their theatrical careers with CSC artistic director **John Doyle**, while offering songs from their rich stage history.



Learn more at  
[classicstage.org/classicconversations](http://classicstage.org/classicconversations)

# BECOME A PATRON AT CSC

For more than 50 years, CSC has been committed to reimagining the classics, and our work today remains true to that fundamental idea. CSC is able to fulfill this mission through the support of its closest friends, our Patrons, and the best way to enjoy our productions is as a CSC Patron.

In recognition of your annual support, you will enjoy exclusive Patron benefits throughout the year, including complimentary tickets in prime locations for each production and invitations to special events with CSC artists. Most importantly, you will be giving back to the theater and supporting CSC's mission to make accessible, world-class classical theater in New York City today.

To learn more, please visit: [classicstage.org/ways-to-give](http://classicstage.org/ways-to-give) or call **212.677.4210 x24**.

## Please consider making a tax-deductible gift at any level to become a CSC Patron today

### THE BARD – \$500+

- Recognition in CSC season digital programs and website
- Invitations to special events, readings, and discussions

### THE ROMEO – \$1,000+

- 2 complimentary tickets to each production in our season
- Invitations to Patron Night performances and receptions

### THE ORLANDO – \$2,500+

- Invitations for 2 to Opening Night performances and party
  - Access to Discounted Guest Tickets (2 per production)
  - Complimentary drink tickets for Everyman Espresso

### THE VIOLA – \$5,000+

- Receive 2 additional complimentary tickets
- Receive cast-signed production poster

### THE PROSPERO – \$10,000+

- Access to Discounted Guest Tickets (4 per production)
  - An additional 2 VIP tickets to all Opening Nights
- Invitation for two to Pre-Show Dinners with CSC artists/staff

### THE TITANIA – \$25,000+

- Invitation to annual Tea with John Doyle, Artistic Director
  - Opportunity to sponsor an Opening Night

# CSC BOARD OF DIRECTORS

---

Lynn F. Angelson, **Chair**  
Therese Steiner, **First Vice Chair**  
Barbara Marks, **Second Vice Chair**  
Donald Francis Donovan, **Chair Emeritus**

## EXECUTIVE COMMITTEE

Paul Blackman	Justin Blake	Raymond DiPrinzio
Daniel M. Abuhoff	Debra Mayer	Matthew Tague
Denise Dickens	Elizabeth Newell	Emma Taylor
Myra Maultasch	Maeve O'Connor	Roslyn Tom
	Gail F. Stone	

# CSC DONORS

---

## \$50,000 AND ABOVE

Lynn & Mark Angelson  
The Angelson Family Foundation  
The Bay and Paul Foundations, Inc.  
Edelman  
Howard Gilman Foundation  
The Hitz Foundation  
The Shubert Foundation  
Harold & Mimi Steinberg Charitable Trust

## \$25,000 - \$49,999

Daniel Abuhoff  
The Chervenak-Nunnallé Foundation  
Donald Francis Donovan & Jennifer Lake  
Barbara H. & Alan D. Marks  
National Endowment for the Arts  
New York City Department of Cultural Affairs  
Elizabeth Newell  
Gail Stone & Matt Fishbein  
Therese Steiner

## \$10,000 - \$24,999

Marc & Robyn Abrams  
ACE Charitable Foundation (CHUBB)  
Paul Blackman  
Joan S. Blaine  
Justin Blake  
Anna-Louise & Gregory Brown  
Ted & Joanna Chapin

Concord  
Con Edison  
Denise Dickens & James Incognito  
Raymond A. DiPrinzio & Lisa Garson  
First Republic Private Wealth Management  
Goldman Sachs  
Horace W. Goldsmith Foundation  
Lucille Lortel Foundation  
Myra Maultasch & Adam Sherman  
Debra Mayer & Joseph Frumkin  
New York State Council on the Arts  
Maeve O'Connor  
Nicola Christine Port  
Benjamin & Donna Rosen  
Jordan Roth/Jujamcyn Theaters  
Henry Rybicki  
The Fan Fox & Leslie R. Samuels Foundation Inc.  
The Scherman Foundation  
The Dorothy Strelsin Foundation  
Sullivan & Cromwell  
Matt Tague & Ross Oliver  
Emma Taylor  
B. Thompson  
The Thompson Family Foundation  
Chaya Albert Genesis Charitable Fund of Triangle Community Foundation  
Anonymous

# CSC DONORS

---

## **\$5,000 - \$9,999**

Axe-Houghton Foundation  
Bloomberg LP  
The Barbara Bell Cumming Foundation  
James & Natalie Davis  
The Gladys Kriebel Delmas Foundation  
Matthew & Lisa Harrington  
Bruce Horten & Aaron Lieber  
Susan Keyes & James Sulat  
Robert Kosinski & Daniel Macy  
Enid Nemy  
NETworks Presentations  
The PECO Foundation  
The Jerome Robbins Foundation  
Laura & Gerald Rosberg  
Jodi Stephens  
Michael Tuch Foundation  
Bruce & Sandra Tully  
Anonymous

## **\$2,500 - \$4,999**

Lisbeth Barron  
Janet Dewar  
Gary DiMauro  
Fred & Suzan Ehrman  
Joanne Flanagan  
Gary Gersh, Innovative Artists  
Bruce Haims & Judy Jackson  
Lisa Huestis & David Van Zandt  
JPMorgan Chase  
Frank & Patricia Lenti  
Theresa M. Martinac  
Edwin S. Maynard & Robin L. Dahlberg  
John Orberg  
Lisa Orberg  
Playbill Incorporated  
The Richenthal Foundation  
Miriam Schneider  
Finley & Patrick Shaw  
Joseph S. & Diane H. Steinberg  
Jane Stine & R.L. Stine  
Jennifer & Ryan Stork

## **\$1,000- \$2,499**

James Adams  
Susan Heller Anderson  
John & Elisabeth Avery  
Gail & Joseph Berardino  
Maggie & Don Buchwald

Mary Chan  
Susan & Bruce Cohen  
Joshua & Ako Dachs  
Michael Davidson  
Dorothy R. Davies  
Lisa M. DeAngelis & Peter M. Okin  
William W. Donnell  
Ehrenkranz Partners  
Jodi Falco & Jeffrey Steinman  
Eric Falkenstein  
Jill & Howard Fife  
Lori & Edward Forstein  
Ann Marie Foss  
David Frankel & Lynn Freedman  
Franklin, Weinrib, Rudell & Vassallo  
Brian Frawley & Amy Anthony  
Bobby & Vicki Freeman  
Leonard Freifelder & Anne Easterling  
Kenneth Goodman  
Jacqueline Grimm  
Anne & John Hall  
Jamie & Jeffrey Harris  
Kent Harvey  
Craig & Vicki Holleman  
Alan Jones & Ashley Garrett  
Robin Jones  
John Kordel Juliano  
Kathy Keneally & Tom Marshall  
Brooke Kennedy  
Drs. Luba & Richard Kessler  
Miodrag Kukrika  
Warren Leight  
Leslie Lewit  
Claire Lieberwitz & Arthur Grayzel, M.D.  
Stephen Lindsay & Brett Sirota  
The Dorothy Loudon Foundation  
Carole & Bill Ludwig  
Gillian Lusins  
Bill & Jane Macan  
Brian & Florence Mahony  
Joyce Menschel  
Cobb Mixter  
Daniel A. Napolitano  
Asha & DV Nayak  
Nederlander Organization  
Elyse & Michael Newhouse  
Marilyn & Peter Oswald  
**\$1,000- \$2,499 (Continued)**  
Will Packer Productions

# CSC DONORS

Amnon & Anne Parizat  
Kathy & Curtis Robb  
Maura & Paul Robinson  
John Rose Jr.  
Neil & Diane Rosen  
S. Gerald Saliman & Raymond Vallejo  
Barry Schwartz  
Beverly & Arthur Shorin  
The Shubert Organization  
Donald Siskind  
Matthew Smyth  
Sara Billinghamurst Solomon  
Christine Steiner  
David Stern  
Christopher Stone  
Bill Thurston  
Universal Theatrical Group  
Freda Wang  
Susan Weiner & Chris Aidun  
David Weisbrod & Margaret Simon  
Barry & Fran Weissler  
Bruce E. Whitacre/Theatre Forward  
Susan Wilen & Peter Segal  
David Williams  
Francis Williams & Keris Salmon  
Susan Yarnell  
Stuart W. Yothers & Travis Hibbs  
F. Anthony & Sally Zunino  
Sue & Burt Zwick

## **\$500 - \$999**

Actors' Equity Foundation  
P. Montorio Archer  
Taffy Benjamin  
Ryan Berkoff  
Judith Borden  
Robert Burrows  
Russ Carmel

Daniel Castellaneta & Deborah Lacusta  
Mary Chan  
Gail Coleman & Saul Kupferberg  
Cathleen Collins  
Daniel Feder  
Anna May & Tim Feige  
Barbara Fleischman  
Stephen Foster  
Egon R. Gerard  
Andrew Halliday & David Greer  
Donna & John Hardiman  
Susan Hochberg  
Jessica & Cas Holloway  
Chris Karagheuzoff  
The Charles & Lucille King Family  
Foundation  
Gary W. Kubek  
David Levine  
Jane McCutcheon  
Marla Nissan  
The Overbrook Foundation  
Lori & Lee Parks  
Brian Paylago  
Elizabeth Sanders  
Michael & Kate Schaper  
Andrew W. Siegel  
Barbara & Leonard Siegel  
Norman C. Simon  
Robert Summer  
Elwin & Rebecca Miller Sykes  
Leah & Christopher Tahbaz  
Kenneth Vittor & Judith Aisen  
Marcia & Dan Wasser  
David & Allison Womack  
David & Monica Zwirner  
Anonymous

*\*Updated as of October 31, 2019*



**Council on  
the Arts**



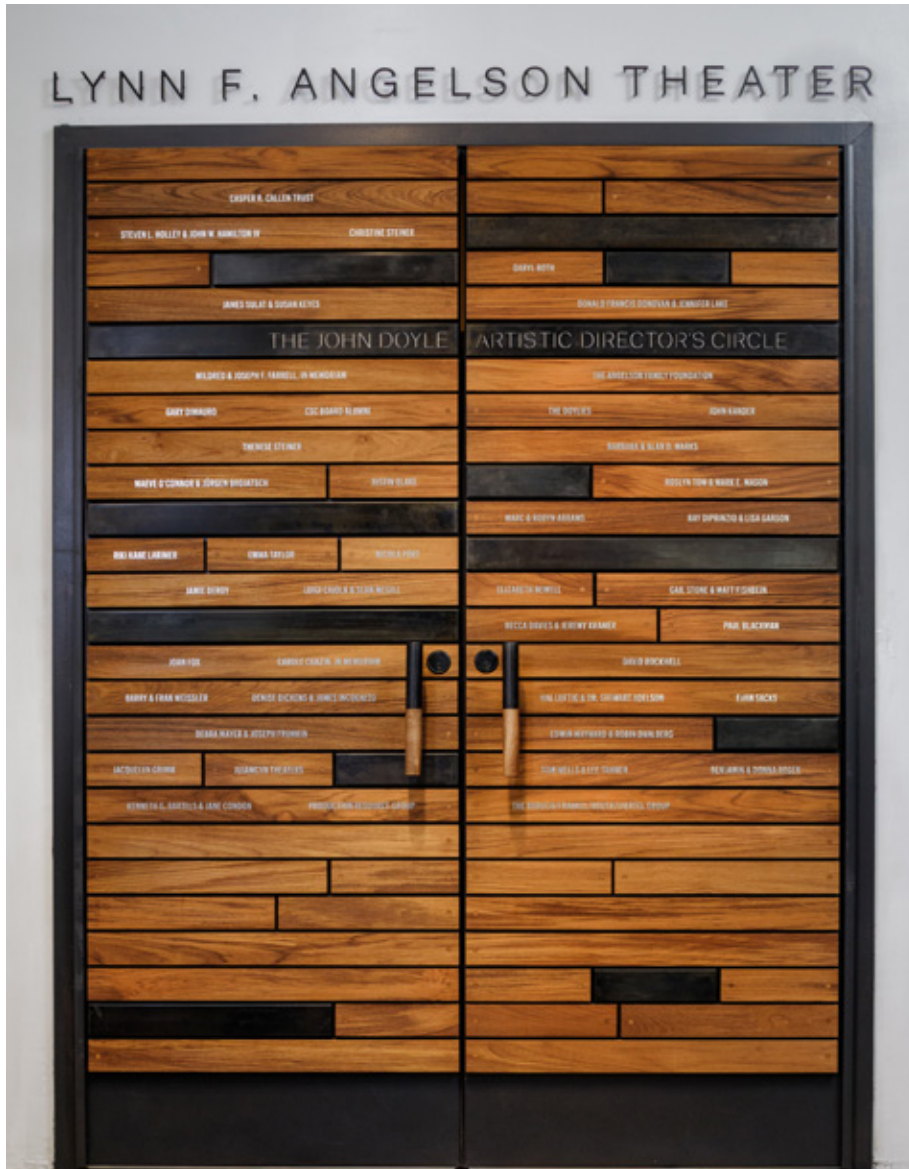
**National  
Endowment  
for the Arts**  
arts.gov

**NYC Cultural  
Affairs**





# THE JOHN DOYLE ARTISTIC DIRECTOR'S CIRCLE



During the 50th Anniversary Season, **The John Doyle Artistic Director's Circle** was established to create a fund to provide CSC with the flexibility and resources to take bold artistic risks under Artistic Director John Doyle's leadership. The Artistic Director's Circle exists to recognize our closest friends who have given their support directly to John's vision for CSC for the years ahead.

Members of **The John Doyle Artistic Director's Circle** are acknowledged with a place for their name on the doors to our theater, designed by David Rockwell.

For more information or to make a gift to join **The John Doyle Artistic Director's Circle** and have your name on our theater's doors, please contact Oliver Pattenden, at [oliver.pattenden@classicstage.org](mailto:oliver.pattenden@classicstage.org) or 212.677.4210 x24.

# THE JOHN DOYLE ARTISTIC DIRECTOR'S CIRCLE

---

Marc & Robyn Abrams  
Dan Abuhoff and Tamsen Granger  
The Angelson Family Foundation  
Kenneth G. Bartels & Jane Condon  
Paul Blackman  
Justin Blake  
Luigi Caiola & Sean McGill  
Carole Chazin, *in memoriam*  
CSC Board Alumni  
Becca Davies & Jeremy Kramer  
The Davis/Motise Family  
Jamie DeRoy  
Denise Dickens & James Incognito  
Gary DiMauro  
Ray DiPrinzio & Lisa Garson  
Donald Francis Donovan &  
    Jennifer Lake  
Molly Doyle, *in memoriam*  
The Doylies  
Mildred & Joseph F. Farrell,  
    *in memoriam*  
Louise Firestone  
Joan Fox  
Jacquelyn Grimm  
Lisa & Matthew Harrington  
Steven L. Holley &  
    John W. Hamilton IV

Jujamcyn Theaters  
John Kander  
Riki Kane Larimer  
Hal Luftig & Dr. Stewart Adelson  
Barbara & Alan D. Marks  
Debra Mayer & Joseph Frumkin  
Edwin Maynard & Robin Dahlberg  
Elizabeth Newell  
Maeve O'Connor  
Nicola Port  
Peter Quick  
The Rockwell Group  
Benjamin & Donna Rosen  
Daryl Roth  
Evan Sacks  
Christine Steiner  
Therese Steiner  
Ed Stern, *in memoriam*  
Gail Stone & Matt Fishbein  
Mr. James Sulat & Ms. Susan Keyes  
Emma Taylor  
Roslyn Tom and Mark E. Mason  
The Baruch/Frankel/  
    Routh/Viertel Group  
Barry & Fran Weissler  
Tom Wells & Lee Tannen  
Robbie Wilson

\*Updated as of October 1, 2019

# STAFF FOR MACBETH

Assistant Lighting Designer ..... Dallas Estes  
Production Management..... Five OHM Productions  
Director of Production ..... Will Duty  
Technical Director ..... Butch Foley  
Production Electrician ..... Tim Neggie  
Production Audio Supervisor..... Lauren Krohn  
Light Programmer..... Serena Wong  
Wardrobe Supervisor ..... Annie Hoeg  
Board Operator ..... Whitaker Gardner  
Videographer ..... Tristan Nash  
Season Scenic Designer ..... John Doyle  
Season Lighting Designers ..... Jane Cox and Tess James

## Casting:

Telsey + Company:

Bernard Telsey CSA, William Cantler CSA, David Vaccari CSA,  
Bethany Knox CSA, Craig Burns CSA, Tiffany Little Canfield CSA,  
Rachel Hoffman CSA, Patrick Goodwin CSA, Karyn Castl CSA,  
Kristina Bramhall, Adam Caldwell CSA, Josh Einsohn CSA,  
Rachel Nadler, Rachel Minow, Rikki Gimelstob, Rachel Dill CSA,  
Ryan Bernard Tymensky CSA, Rebecca Scholl CSA, Scott Galina,  
Madison Sylvester, Lauren Harris, Laura Wade,  
Ally Kiley, Rose Bochner, Kristian Charbonier,  
Destiny Lilly, Lily Schneider, Meghan Ryan,  
Yoonji Jang, Samantha Marzec

## Credits:

Scenic items fabricated by Tom Carroll Scenery, Inc.  
Lighting Equipment from Hayden Production Services, Inc.  
Audio Equipment and Services from Five OHM Productions  
Costume Tweeds provided by Campbell's of Beaulieu

## Special Thanks:

Walkers Shortbread, Inc.  
Eric Winterling, Inc.  
Ava Callen  
The Penny Farthing  
The Staff of OvationTix  
Kara Jones, Ruth Bernstein, Kendall Heininga, Pauline Negrete  
Catherine Herzog and Amanda Bartolini  
Feast

# CSC ADMINISTRATIVE STAFF

John Doyle, **Artistic Director**  
Toni Marie Davis, **Chief Operating Officer/GM**

Sheree Grate, **House Manager**  
Phil Haas, **Director of Marketing & Communications**  
Kara Hogan, **Development Assistant**  
Rachael Langton, **Digital Marketing Associate**  
Brendan McNamara, **Assistant General Manager**  
Michael Mullen, **Education Coordinator**  
Cassandra Nwokah, **Gala Coordinator**  
Oliver Pattenden, **Director of Development**  
Troy Segala, **Box Office Assistant**  
Graham Shelton, **Audience Services Manager**  
Ryan Skerchak, **Front-of-House Assistant**

# SPECIAL SERVICES

Schall & Ashenfab, CPAs, LLC, **Auditor**  
Joan Marcus, **Company Photographer**  
Robert Goldberg, Yorke Construction, **Construction**  
Gallagher, **Insurance**  
OvationTix, **Ticket Services**  
Capacity Interactive, **Digital Marketing**